



## Poly Pet Unicorn

### Supplies & Tools:

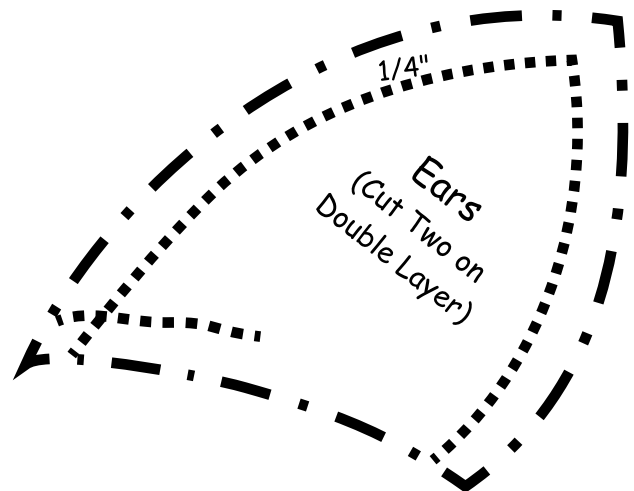
- Fleece (Pillow Panel/Horn/Strap) ½ yd
- Fleece (Head/Legs/Mane/Tail) 1/3 yd x 60"
- Soft 'n Crafty® pillow insert, 14" x 14"
- Poly-Fil® premium polyester fiberfill, 10oz
- 15mm Animal Eyes
- Velcro strip, ¾" x ½"

### Directions:

1. Cut two 14" x 14" pillow panels. Set aside.
2. Cut pattern pieces from fabric.
3. Using the Neck Hole Template, cut a hole onto the top pillow panel 1½" from the edge.
4. Finish sewing Legs and stuff.
5. Finish sewing Ears. Fold down inner ear and handstitch close.
6. Topstitch angles on Horn pieces, sew Horn pieces together and lightly stuff.
7. Sew right side of Head strip on to right Head piece.
8. Sew bottom of Horn onto right Head piece.
9. Sew the folded side of Mane on to right Head piece.
10. Cut ¼"-½" strips on Mane.
11. Sew left Head piece onto right Head piece.
12. Insert Animal Eyes per manufacturer's instructions.
13. Sew the Head/Neck onto the hole of the top pillow panel.
14. Sew the legs onto the top pillow panel.
15. Fold the Tail in quarters lengthwise and sew Tail to the back of the top pillow panel. Cut ¼" - ½" strips on tail.
16. Finish sewing the straps and sew straps centered on sides of top pillow panel.
17. Sew the top pillow panel and bottom pillow panels together, leaving a 4" opening on one side of the tail.
18. Stuff the Head and insert pillow form in opening. Hand stitch to close opening.



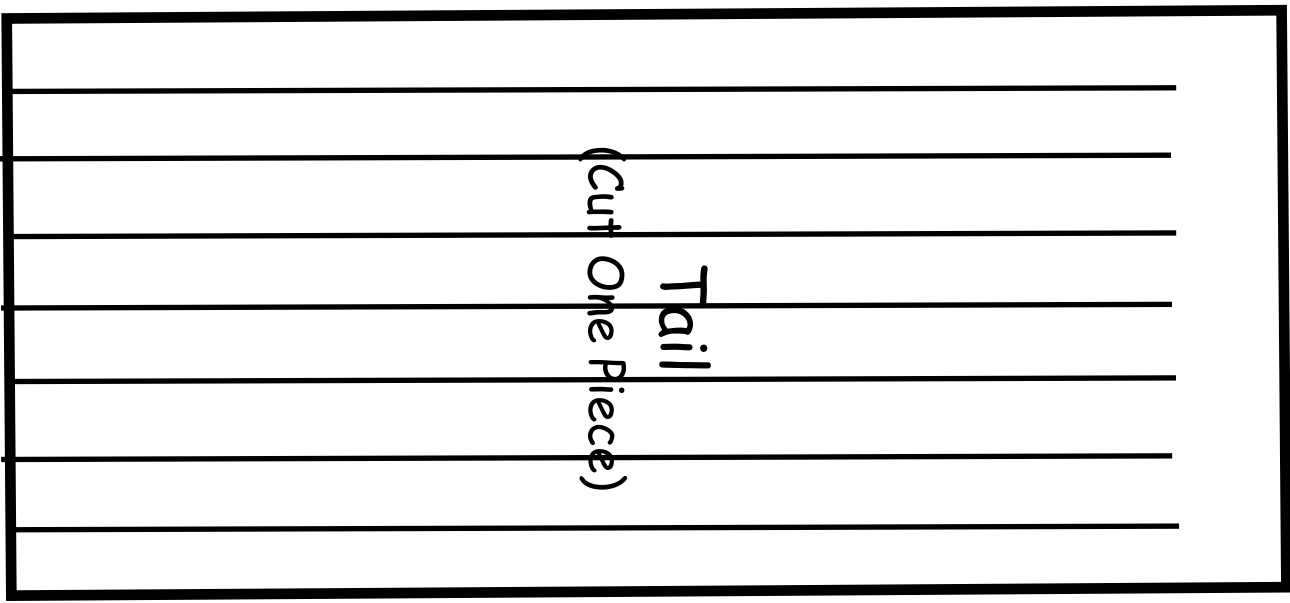
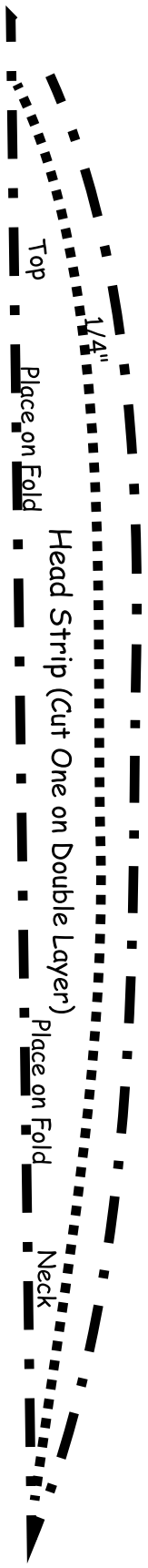
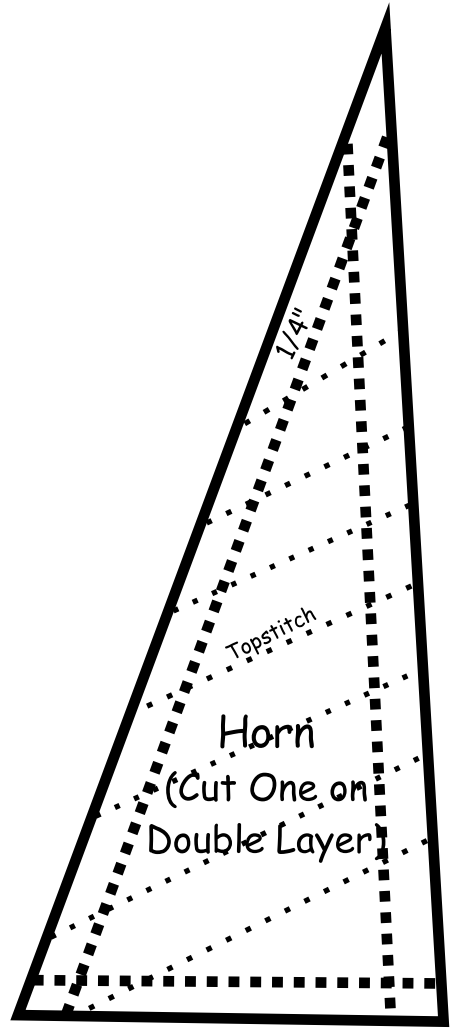
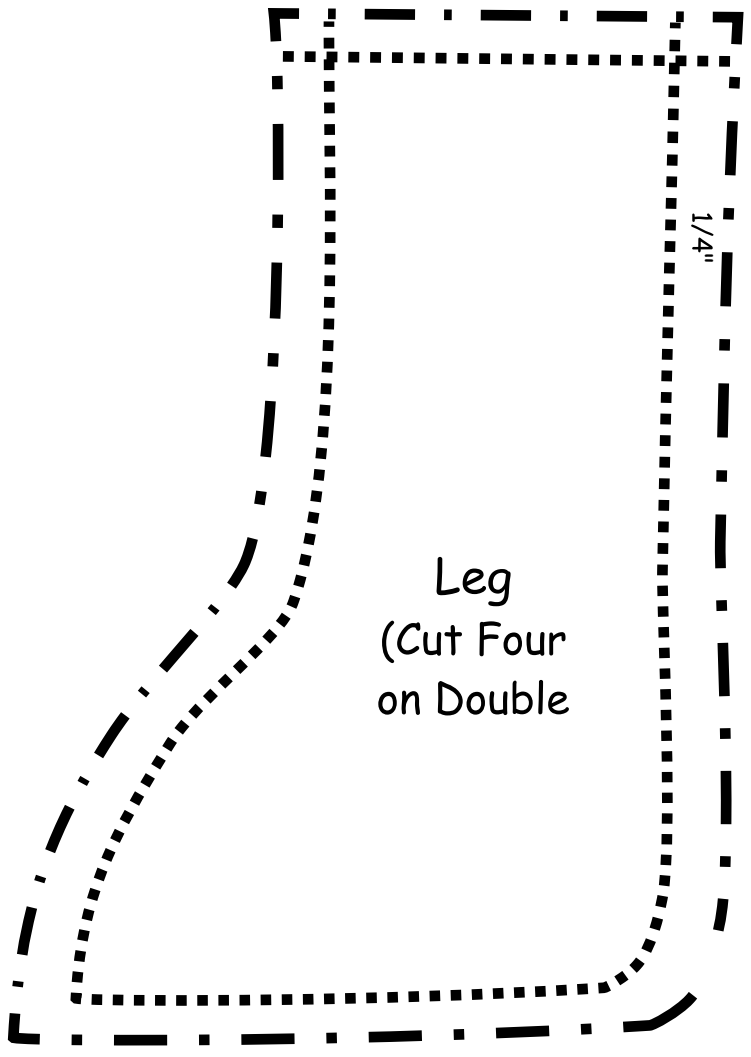
### Template pieces are ACTUAL SIZE



Front

# Neck Hole Template

Back



Follow us! [Facebook.com/fairfieldworld](https://www.facebook.com/fairfieldworld)  
 and [twitter.com/fairfieldworld](https://twitter.com/fairfieldworld)  
 Quilted logos created by Lisa Williams

