

Elmore Penguin

*a Sewing Pattern by
Jennifer Jangles*



Fabrics and Notions needed:

Body and Hair
Tummy
Wings
Beak and Feet
Eyes
2 1/2" black beads or buttons
8" x 8" piece of fusible web
Fairfield Fiberfill
12" 1/2" ribbon
Coordinating Thread
Optional, Fairfield pellets

Cutting Instructions:

Cut Body and Hair from black fabric
Cut Tummy from stripe/print fabric
Cut Wings from snowflake/blue fabric
Cut Beak and Feet from orange fabric
Cut eyes from white felt

All fabrics shown in Elmore are Jolly Holiday by Jennifer Heynen for In The Beginning Fabrics. To see more fabrics, patterns, and inspiration from Jennifer visit:

www.jenniferjangles.blogspot.com
www.jenniferjangles.com



Happy Sewing!

Jennifer Jangles



Copyright Info

Jennifer Jangles, LLC. allows the use of her patterns for home sewing. The purchaser may use the patterns for personal use. Patterns should not be copied or reprinted in any form. This is strictly prohibited. Please inquire to jennifer@jangles.net with any questions you have regarding commercial use.

1. Start by fusing the tummy to one of the body pieces. Placement can be found on the pattern piece. Zig zag stitch around the raw edge to secure.

2. Sew around the outside of the hair pieces with right sides facing. Leave the bottom straight edge open for turning. Clip the corners, turn and press.



Step 1.

3. With pointy edge facing down pin the hair to the body paying attention to the marks on the pattern piece. With the right sides facing inward, pin the body pieces together. The hair should be sandwiched inside.

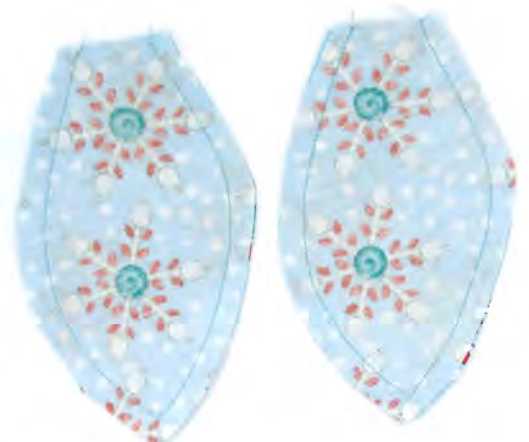


4. Sew around the outside of the body, leaving the bottom straight edge open.

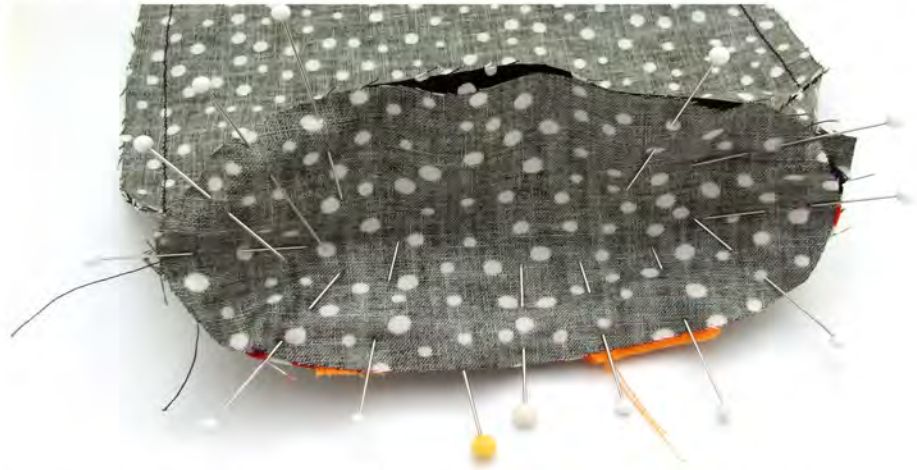


Step 4.

5. With right sides together sew together the two sets of wing pieces, the beak pieces, and the two sets of feet pieces. Pay close attention to the sewing marks of the pattern pieces to see which section to leave open for turning. Clip turn and press all of these pieces.



6. Pin the feet to the bottom of the front body of the penguin. Next, pin bottom of the penguin to the straight sides of the body. Sew around the edge, leaving a 2-3 inch opening at the back for turning.



7. Clip any curves and turn right side out. Fill with fiberfill. If you want your Elmore Penguin to sit upright by himself, fill the bottom of his body with the Fairfield weighted pellets. Stitch the opening closed. Set aside for now.



8. With a needle and thread run a gathering stitch around the outside of the beak. Fill the beak with fiberfill and pull the running stitch tight. This should make the raw edges turn in. Tie a knot to secure thread and keep it from coming loose. With the thread still attached sew the beak to the body.



9. Pin the felt eye pieces just above the beak. Hand stitch around the outside to hold in place. Sew the black beads or buttons in the center of these.



10. Tie a bow with your ribbon. Trim tails to the desired length and tack stitch just under Elmore's beak.



11. Turn the raw edges in on the tops of the wings. Stitch in place on the sides of the body.



Hope You Had Fun!

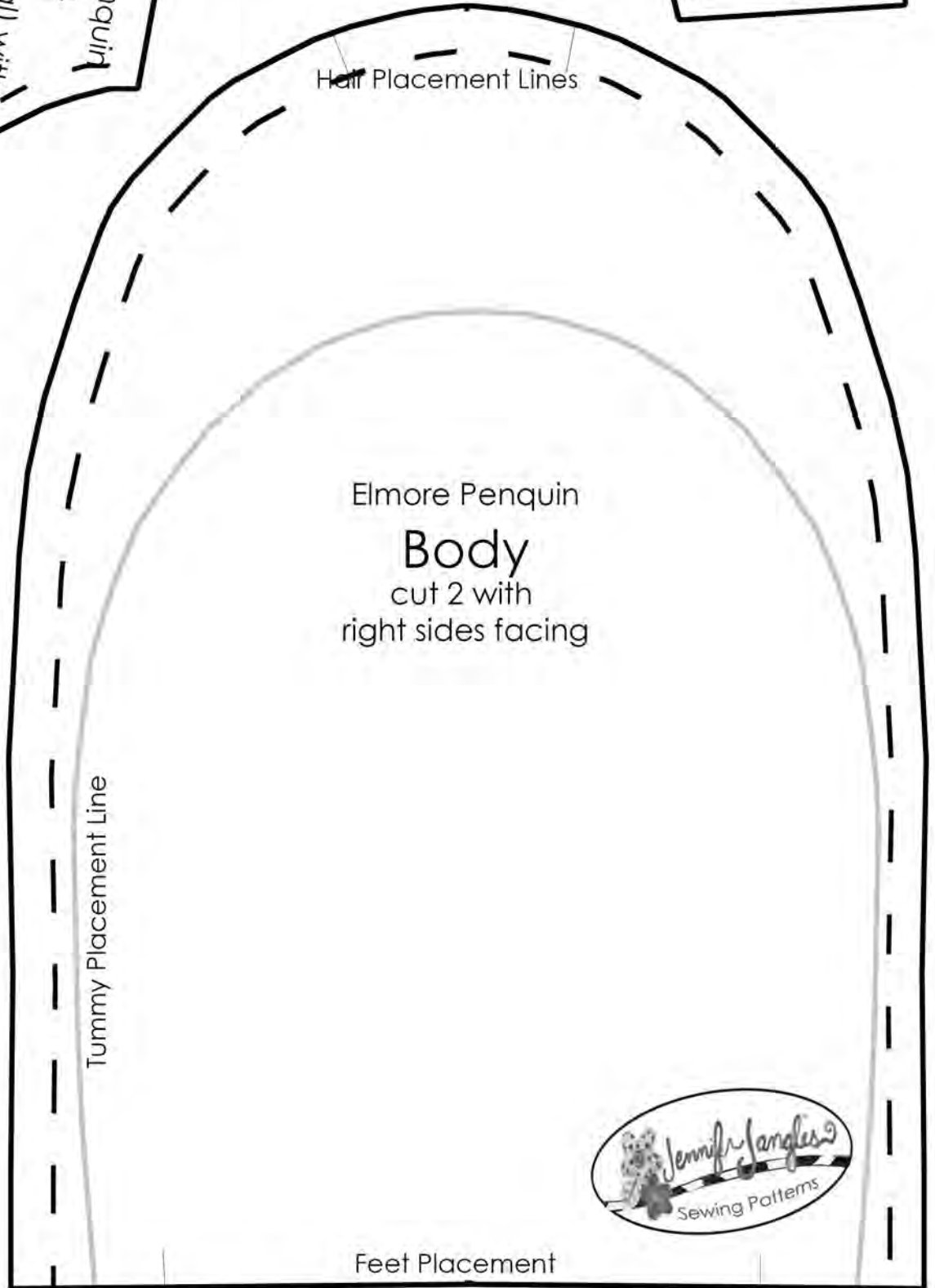
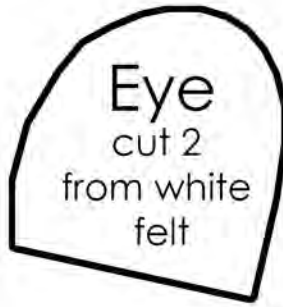
Jennifer Jangles
and



Fairfield www.fairfieldworld.com
(800) 980-8000

Elmore Penguin

All pattern pieces have a 1/4 inch seam allowance built in.



Elmore Penguin

All pattern pieces have a 1/4 inch seam allowance built in.

