

*M' Liss Rae Hawley's*  
**Fresh from the Garden Tote**

18" x 15" (excluding tote bottom)

© Copyright 2010

This colorful, versatile tote is fun and easy to make, even for a beginner. I created the pattern to showcase **Fresh from the Garden**, my new fabric line for **Hancock Fabrics** and **Fairfield's Fusi-Boo** batting. The breezy bag goes together so quickly, you'll want to make extras to give as gifts to family and friends. Happy stitching!



M'Liss with Dashiell



**Note:** In the sample tote, Fabrics A, D, F, and G are directional fabrics, with the motifs shown (including words) printed across the fabric width. If you select a print that has a directional motif printed lengthwise on the fabric (parallel to the selvage), cut these pieces from the length of the fabric. This may require additional fabric.

Fabric B is also a directional fabric, this time with the motifs printed parallel to the selvage. If you select a fabric that has a directional motif printed crosswise on the fabric (selvage to selvage), you can cut these pieces across the fabric width. This will require less fabric.

### Creative Option

If you'd like, you can add a strip of printed selvage to the center block on one side of the tote face as shown in the sample tote.

Here's how:

1. From the printed selvage edge of the fabric, cut 1 strip, 2 x the width of the selvage + 1/4". Centering the words you wish to feature, trim the strip to measure 6 1/2" long.
2. Turn under the long raw edge of the trimmed selvage strip 1/4". Press. Fold the strip in half lengthwise, wrong sides together. Press.
3. Baste the prepared selvage, printed side out, 1/4" from the bottom edge of one 6 1/2" Fabric B square. Topstitch along the edges of the selvage 1/8" from the top edge and bottom edges to secure, and proceed to Making the Tote Face.

### Cutting

*Cut all strips across the fabric width.*

#### From Fabric A and C:

Cut 2 pieces each, 6 1/2" x 6 3/4"

#### From the **lengthwise** grain of Fabric B:

Cut 2 squares, 6 1/2" x 6 1/2" \*

#### From Fabric D:

Cut 4 strips, 3 1/2" x 19"

### Materials

Based on 42" fabric width unless otherwise noted. All fabrics (A – G) are from my fabric line Fresh from the Garden for Hancock Fabrics. Refer to project diagram for fabric placement.

- 1/4 yard each of Fabrics A and C for side blocks
- 1/2 yard of Fabric B for center square
- 1/4 yard of Fabric D for border strips
- 1/8 yard of Fabric E for top band
- 3/8 yard of Fabric F for bottom edge
- 1/3 yard of Fabric G for handles
- 5/8 yard of fabric for lining (I used Fabric A.)
- Shape-Flex Craft Pack (20" x 45")
- Fairfield *Fusi-Boo* batting (36" x 45")
- 1/8 yard of 40"-wide medium-weight fusible stabilizer
- Sulky 30# embroidery thread for machine quilting (I used, #1066, #1020, #1177, and #1193.)

**From Fabric E:**

Cut 2 strips, 1 3/4" x 19"

**From Fabric F:**

Cut 1 piece, 10 1/2" x 19"

**From Fabric G:**

Cut 2 strips, 3 3/4" x 40"

**From the lining fabric:**

Cut 1 piece, 19" x 37"

**From the Shape-Flex:**

Cut 1 piece, 19" x 37"

**From the batting:**

Cut 1 piece, 19" x 37"

Cut 4 strips, 1 3/8" x 37"

**From the stabilizer:**

Cut 2 strips, 1 3/8" x 37"

*\*Fussy cut as desired.*

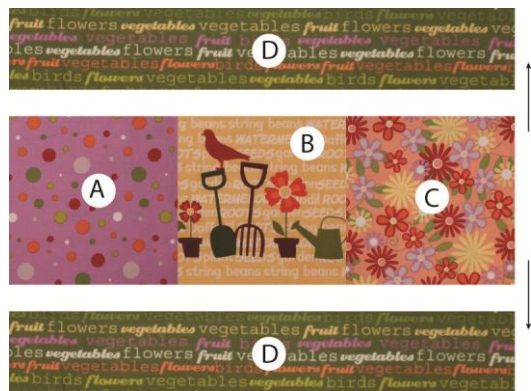
**Making the Tote Face**

Sew with right sides together using a 1/4" seam allowance unless noted otherwise. Press as directed.

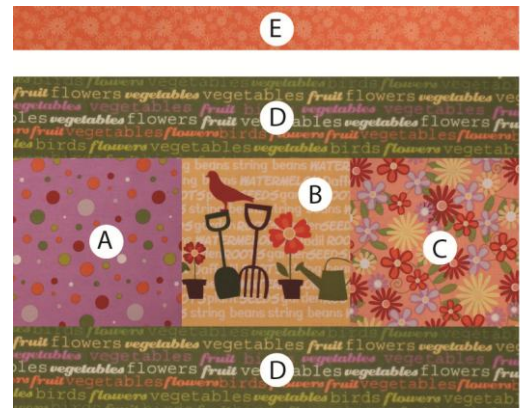
1. Sew one Fabric B square between a Fabric A and Fabric C piece as shown. Press. Make 2.



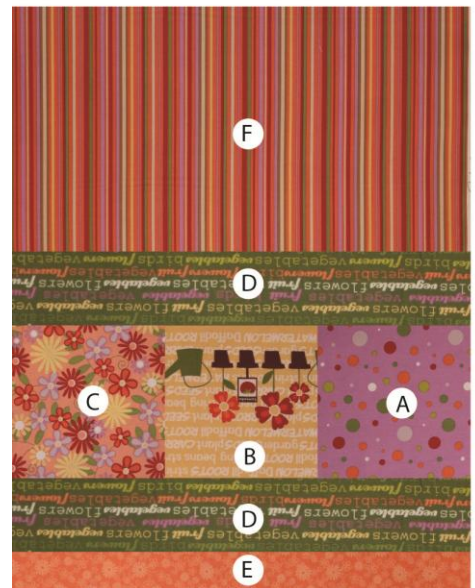
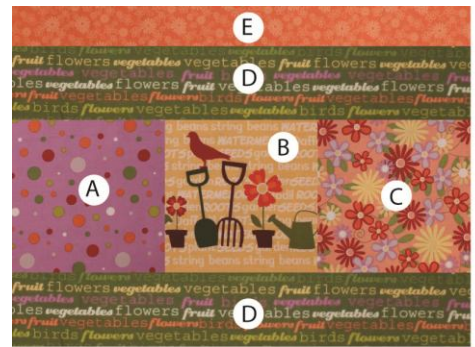
2. Sew one unit from Step 1 between two Fabric D strips as shown. Press. Make 2.



3. Sew a Fabric E strip to the top edge of each unit from Step 2 as shown. Press. Make 2.



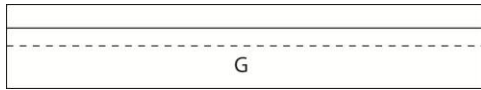
4. Sew the Fabric F piece between the two units from Step 3, taking care to position the units as shown. Press. set the completed tote face aside for now.



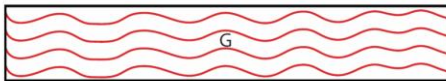
**Making the Handles**

1. Center a 1 3/8"-wide stabilizer strip on the wrong side of one Fabric G handle strip; follow the manufacturer's directions to fuse. Layer two 1 3/8"-wide strips of batting over the stabilizer. Fold the long, raw edges of the fabric

strip over the stabilizer and batting, overlapping the edges at the center. Fold under a 1/4" seam allowance, press, and then baste down the center of the strip as shown. Repeat to make the other handle.

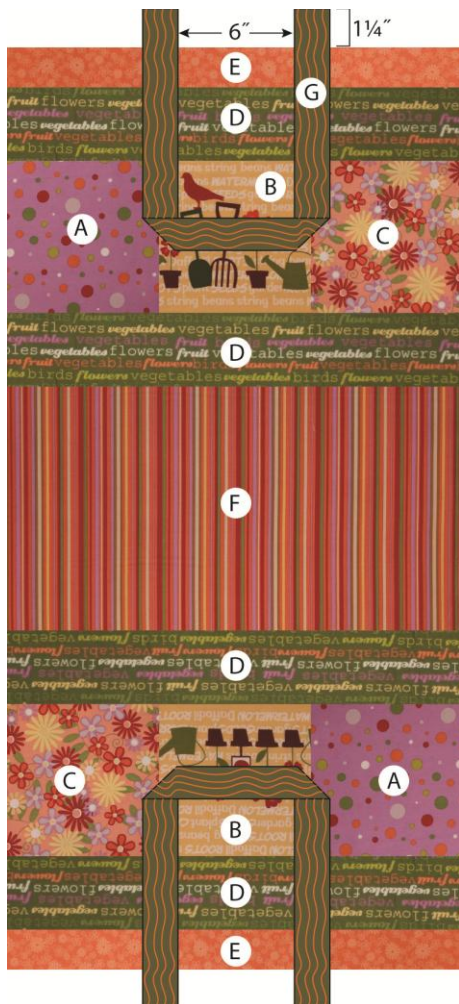


2. Embellish each handle with decorative stitches as desired. (My favorite is the Serpentine stitch.) Trim the handles to the desired length. I trimmed mine to approximately 37".



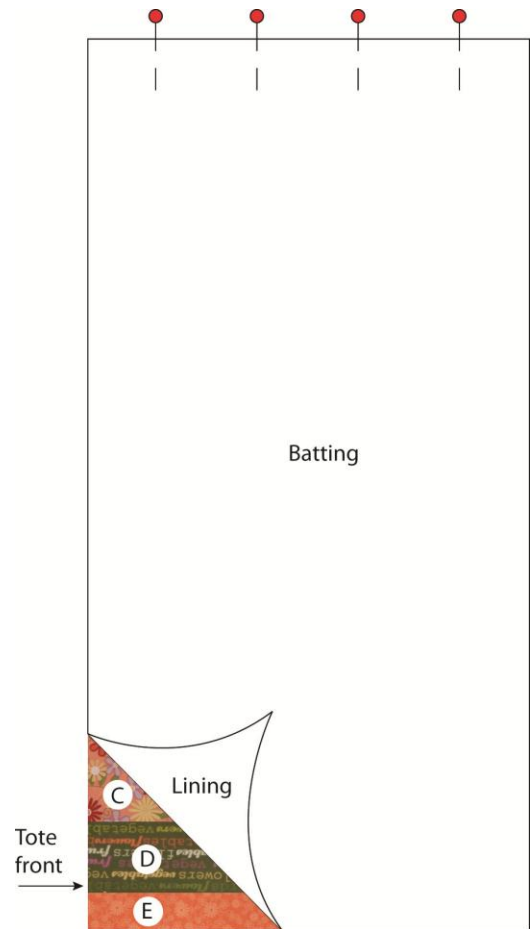
### Assembling the Tote

1. With right sides together, position one handle strip at each short end of the tote front, extending the handle ends 1 1/4" beyond the tote edges as shown; baste in place.



2. Follow the manufacturer's directions to prepare and press the *Shape-Flex* stabilizer to the wrong side of the tote lining.

3. Layer the tote front (right side up), the lining (right side down), and the 19" x 37" piece of batting. Smooth the three layers, taking care to keep the raw edges aligned. Pin the layers together along the short (Fabric E) edges; stitch. Turn the tote right side out.

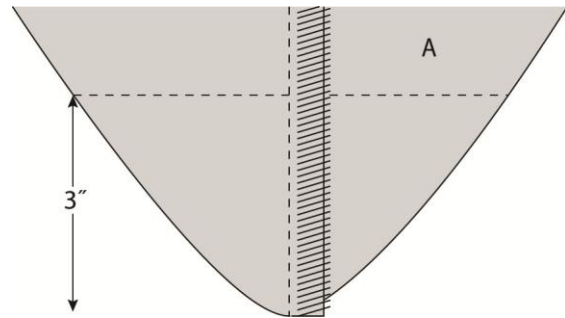


4. Follow the manufacturer's directions on the *Fusi-Boo* package to fuse the three layers together. This eliminates the need for basting.

5. Topstitch along the short (Fabric E) edges. Quilt in the ditch along the vertical and horizontal seams and then add additional quilting as desired.



side seam. Finish the raw edges as described above in #6.

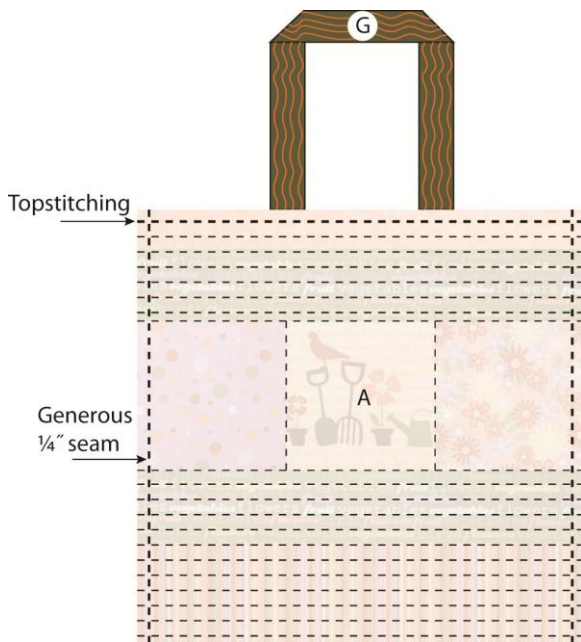


8. Turn the tote right side out, and then follow the *Fusi-Boo* instructions for laundering to remove the adhesive. Press the finished tote...and enjoy!

**Tip**

The fabrics you select for the body of the bag—and even the lining—can be a wonderful source of quilting ideas. For a simple quilting solution, outline the fabric motifs.

6. Fold the tote in half, lining side out and raw edges aligned. Pin the layers together. Stitch a generous 1/4" from the long raw edges. Zigzag or serge the raw edges for added strength and beauty.



7. Fold the tote—still lining side out—so one long side seam runs down the center, facing you. (The tote will form a large triangle.) Measure 3" from the tip; mark and stitch across the point as shown. Repeat on the other



[www.poly-fil.com](http://www.poly-fil.com)

M'Liss's Design & Quilting World LLC ©2010  
[www.ExperienceQuilting.com](http://www.ExperienceQuilting.com)

