

Easy No~Sew Pillows



Patterns by: Marsha Moore



Asian Influence

Materials:

- Poly-fil® Soft Touch 14" pillow
- 1/2 yard main cotton print fabric
- 1/2 yard coordinating cotton print fabric
- Three frog closures

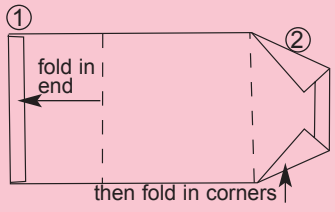
- 2 yards Stitch Witchery® 5/8" - wide fusible bonding tape
- Fabri-Tac® Permanent Adhesive

Tools:

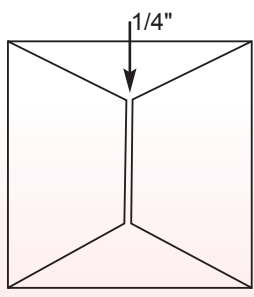
- Ruler
- Scissors
- Fabric marking pen
- Straight pins
- Iron

Directions:

- 1) From each fabric, cut a 32" by 15 1/4" rectangle.
- 2) Place main print fabric on ironing board right side up.
- 3) Place a strip of Stitch Witchery 5/8"-wide fusible bonding tape along each long edge of the rectangle, see diagram. Place the remaining fabric right side down matching edges. Following manufacturer's directions, fuse fabrics together along edge. Allow fabric to cool.
- 4) Carefully turn fabric tube right side out.
- 5) Place pillow insert in center of tube.
- 6) With the coordinating fabric side up, fold fabric up 1 1/2" from side edges, see diagram step ①



7) Pin flaps in place on pillow front. Center edges should be 1/4" apart, see diagram.



8) Apply Fabri-Tac Permanent Adhesive to wrong side of loops on one side of frog closure. Glue to vertical center edge of one flap. Apply adhesive to loops on other side of closure and glue to second flap.

9) In the same manner glue remaining frog closures to upper and lower edges of flaps.



Envelope Pillow:

Materials:

- Poly-fil® Soft Touch 18" pillow
- 1 1/2 yds. cotton print fabric (you can make two pillows from this fabric)
- 1 1/2 yds. 1 1/2"wide plaid ribbon

- 3 yds. floral print ribbon
- 1 yd. beaded trim
- 1 yd. variegated fringe
- 6 yards Stitch Witchery® 5/8"-wide fusible bonding tape
- Fabri-Tac® Permanent Adhesive

Tools:

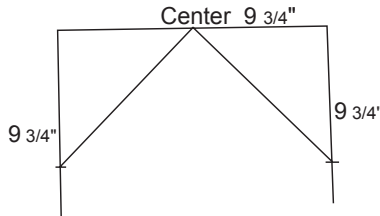
- Ruler
- Scissors
- Fabric marking pen
- Straight pins
- Iron

Directions:

Note: Test all trims and fabrics to determine if they can be fused following the manufacturer's directions. If a trim or ribbon can not be fused try using adhesive to hold the trim in place.

1) Cut a 49 1/2" x 19 1/2" piece of fabric.

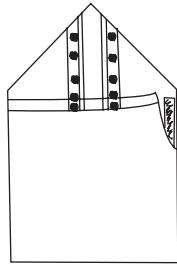
2) To make flap, on wrong side mark center of one 19 1/2" edge. Then measure 9 3/4" down from top on each side edge and mark a point. Connect side points to center top and cut along lines, see diagram.



3) Following manufacturer's directions, fuse plaid ribbon to vertical center on right side of fabric using two strips of Stitch Witchery. Glue or fuse a length of floral ribbon 1/4" from each side of plaid ribbon.

4) Press under 5/8" on edges of flap and on 19 1/2" edge for hems. Following manufacturer's directions, fuse hem in place using a strip of Stitch Witchery.

5) With right sides together, fold up 18" to create a pocket, see diagram. Insert a strip of Stitch Witchery between side edges and fuse seam in place. Allow fabric to cool.

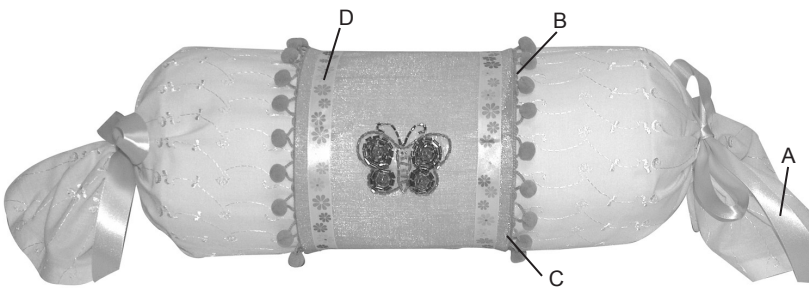


6) Turn right side out. Fuse remaining side edges above pocket in place.

7) Place flap on work surface wrong side up.

Glue ribbon edge of beaded trim to hem of flap. Then glue edge of variegated pastel fringe over beaded trim. Allow glue to dry.

8) Place pillow insert inside pocket and fold flap down.



Materials:

- Poly-fil® Soft Touch 5" x 14" bolster pillow
- 1 1/2 yd. eyelet fabric
- 1/4 yd. pastel fabric
- 1 1/4 yds. pastel ball trim
- 1 1/4 yds. 5/8" wide floral print ribbon
- 1 1/2 yds 7/8" wide pastel satin ribbon
- One beaded or embroidered butterfly applique
- 6 yards Stitch Witchery® 5/8"-wide fusible bonding tape
- Fabri-Tac® Permanent Adhesive

Tools:

- Ruler
- Scissors
- Fabric marking pen
- Straight pins
- Iron

Directions:

Note: Test all trims and fabrics to determine if they can be fused following the manufacturer's directions. If a trim or ribbon can not be fused try using adhesive to hold the trim in place.

From eyelet fabric, cut two 13 3/4" by 21" pieces.

From pastel fabric, cut one 7 1/4" by 21" piece.

1) Press under 5/8" on one 21" edge of each eyelet rectangle. Place a strip of Stitch Witchery 5/8"-wide fusible bonding tape inside fold on hem. Following manufacturer's directions, fuse hem in place for outside edges of fabric tube (A).

2) Cut two 21" lengths of Stitch Witchery. Place one piece on right side of remaining 21" edge of eyelet so inner edge of tape is 5/8" from edge. Fuse ball trim to eyelet (B).

3) Press under 5/8" on 21" edges of pastel strip. Place a strip of Stitch Witchery along seam allowance of eyelet and fuse center strip to seam allowance, see diagram (C).

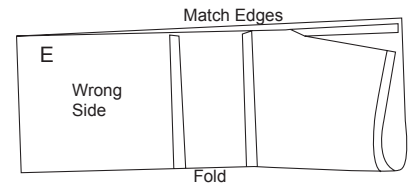
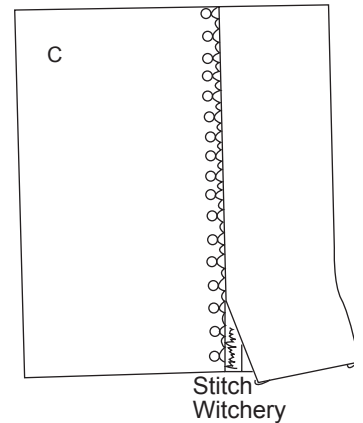
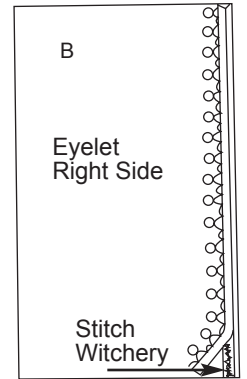
4) Fuse 21" lengths of ribbon to the center panel 3/8" from side edges (D).

5) Trim ball fringe 5/8" at upper and lower edges of bolster cover. Place a strip of Stitch Witchery along right side of upper edge of fabric. Fold lower edge of fabric over Stitch Witchery matching edges, see diagram (E). Fuse edges together. Allow fabric to cool. Turn right side out.

6) Insert bolster in center of tube.

7) Cut two 27" lengths of satin ribbon. Gather fabric over end of bolster and tie ribbon around fabric making a bow.

8) Glue butterfly applique to center of center strip.



For more projects and ideas, visit our websites:

ragshop

www.ragshop.com

Fairfield

www.poly-fil.com