



FAIRFIELD DESIGNER BLOCK OF THE MONTH

Cool Lizards and Hot Lizards

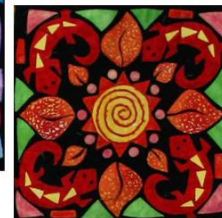
by Karen Eckmeier (2009)

19 South Road

Kent, CT 06757

860-927-4201

www.quilted-lizard.com



Bio Blurb: Karen is an award-winning fiber artist, whose work has been recognized both nationally and internationally. She is the author of 3 books, *Accidental Landscapes™*, *Happy Villages™*, and *Layered Waves*. Her workshops, books, and patterns share her favorite techniques: layered/topstitching, collage, and raw-edge appliqué. The design for Karen's block of the month combines elements from her "Lucky Lizards" pattern series and a brand new pattern series for 2010 entitled "Circle of Friends," which uses straight-stitch appliqué and couched yarns.

Cool Lizards

Fabric Requirements:

12½" square solid black

Lizards: ¼ yard bright blue

Leaves: 1/8 yard blue/green

Center Circle & Lizard's Back Triangles: 1/8 yard dark purple

Center Flower Petals & Filler Bars: 1/8 yard cool pink

Small Circles and Corner Triangles: 1/8 light blue

Filler Triangles: 1/8 medium value purple

Hot Lizards

Fabric Requirements:

12½" square solid black

Lizards: ¼ yard red

Leaves: 1/8 yard yellow/orange print

Center Circle & Lizard's Back Triangles: 1/8 yard yellow

Center Flower Petals & Filler Bars: 1/8 yard orange

Small Circles and Corner Triangles: 1/8 warm pink

Filler Triangles: 1/8 warm yellow/green

Supplies for both Blocks:

Thin yarn to match lizard fabric (approx. ½ yard)

Paper-backed fusible backing

Stabilizer for machine appliqué

Fabric glue with applicator tip

Thread to match fabrics

8 beads for lizard eyes (optional)



Directions:

Following the directions on the paper-backed fusible of your choice, trace the following number of images onto the fusible paper. The images have already been reversed.

- Trace 4 Lizards
- Trace 4 each of the a, b, c, d triangles on lizard backs;
- Trace 1 Center Flower Petals Shape
- Trace 1 Large Circle (flower center)
- Trace 10 Small Circles
- Trace 4 Large Leaves
- Trace 4 Small Leaves
- Trace 4 Filler A Triangles
- Trace 4 Filler B Triangles
- Trace 4 Corner C Triangles
- Trace 4 Filler Bars

Follow paper-backed fusible directions for cutting and ironing the traced shapes.

Fold the black 12½” square of solid black fabric in half and then in half again. Use your fingers to press along the folds to create crease lines. Open the square up again. The center point and the midway points along the sides of the block should now be visible.

Place the Center Flower Petals Shape so that the “top center” indicator arrow aligned on the midway top crease of the black square of fabric. Align the points of the two side petals so they are lined up with the midway side creases.

Next position the Large Circle on top of the Center Flower Petals Shape.

Add the Small Circles in between each of the petals.

Place the 4 Large Leaves on the midway creases of the top, bottom, and two sides.

Position the 4 Lizards between the 4 Large Leaves, using the photo as a guide to placement.

Fill in the design with the Small Leaves, Filler A & B Triangles, Filler Bars, and Corner C Triangles, using the photo as a guide to placement.

When you are happy with the placement, iron in place.

Apply fabric glue with an applicator nozzle to draw a spiral on the Large Circle (refer to dotted spiral on Large Circle for a sample spiral and placement). Place a piece of yarn on top of the spiraling line of glue. Stitch in place once the stabilizer has been added to the back of the block.

Use your choice of stabilizer to prepare for the machine appliqué of the shapes. Match the threads to the fabrics. This block uses straight-stitch raw edge appliqué. Feel free to use satin stitch, zig-zag, or a decorative stitch to machine appliqué your shapes.

Remove stabilizer and press well.

After the quilting has been completed, hand-stitch small contrasting beads for the lizard eyes.

