



# M'Liss Rae Hawley's Spring Floral Placemats and Napkins

Finished Sizes: Placemat: 19 1/2" x 14 1/2" Napkin: 18" x 18" (serged);  
17" x 17" (hemmed) © Copyright 2010



M'Liss & Dashiell

These instructions make a charming quartet of table accessories: four matching placemats and four coordinating napkins. They are perfect for use at your own table or as gifts for special family members or friends. They also are quick and easy to make—ideal for beginners and children as well! I created them to showcase **Spring Floral**, my new fabric line for **Hancock Fabrics**, and Fairfield's **FUSI-BOO™** fusible batting.

## Materials:

Based on 42"-wide fabric unless otherwise noted. All fabrics (A – G) are from my Spring Floral fabric line for Hancock Fabrics. Refer to the project diagrams for fabric placement.

1/3 yard each of Fabrics A, B and C for placemat tops  
3/8 yard of Fabric D for placemat tops  
1 1/3 yards of Fabric E for placemat borders and backing  
5/8 yard each of Fabric F and G for napkins  
36" x 45" FUSI-BOO™ fusible batting for placemats  
Basic sewing supplies

## Cutting:

Cut all strips across the fabric width unless otherwise noted.

**Note:** In the sample shown, Fabrics B, C, and E are directional fabrics. For Fabric E, the printed motif runs along the **lengthwise grain** (parallel to the selvage). If you choose a fabric with a motif that runs along the **crosswise grain** (selvage to selvage), reverse the cutting instructions shown below for Fabric E. This will require more fabric. If

you choose a non-directional fabric, you can cut all the strips and pieces for Fabric E across the fabric width. This will require less fabric.

## From the marked selvage of any of the fabrics (A – G), cut:

4 strips, 2 x the width of the selvage + 1/4". Trim each strip to 9".

## From each of Fabrics A, B and C, cut:

2 strips, 4 1/2" x 40"; crosscut into:  
4 rectangles, 4 1/2" x 12 1/2" (8 total)

## From Fabric D, cut:

2 strips, 5 1/2" x 40"; crosscut into:  
4 rectangles, 5 1/2" x 12 1/2"

## From Fabric E, cut:

4 strips, 1 3/4" x 40"; crosscut into:  
8 strips, 1 3/4" x 15", for the side borders

## From the remaining lengthwise grain of Fabric E, cut:

8 strips, 1 3/4" x 17 1/2", for the top and bottom borders  
4 pieces, 15" x 20"

**From each of Fabrics F and G, cut:**  
2 squares, 18" x 18" (4 total)

**From the FUSI-BOO fusible batting, cut:**  
4 rectangles, 20" x 15"  
**Making the Placemats**

*RST = right sides together. WST = wrong sides together. Sew all seams using a 1/4" seam allowance. Press as directed.*

1. Arrange one each of the 4 1/2" x 12 1/2" Fabric A, B, and C rectangles as shown. RST, pin and sew the strips together along their long edges. Press.



2. RST, pin and sew a 5 1/2" x 12 1/2" Fabric D strip to the right edge of the unit from Step 1. Press toward Fabric D.



3. RST, pin and sew a 1 3/4" x 17 1/2" Fabric E strip to the top and bottom of the unit from Step 2. Press toward the strips. Pin and sew a 1 3/4" x 15" Fabric E strip to the sides. Press.



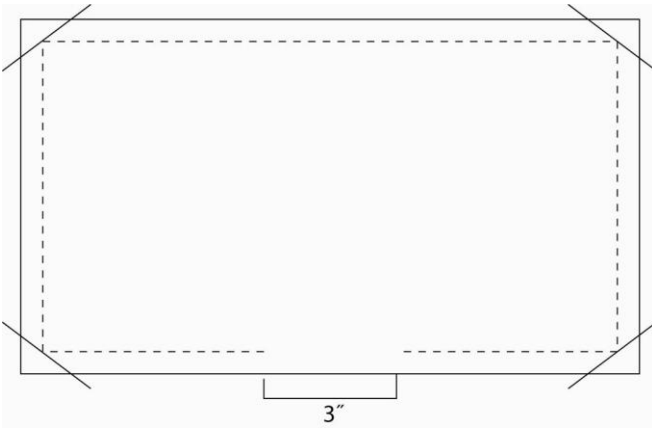
4. Turn under the long raw edge of one 9"-long selvage strip 1/4". Press. Fold the strip in half lengthwise WST. Press. Topstitch approximately 1/8" from the first folded edge as shown.



5. Baste the prepared selvage, marked side up, to the lower-right corner of a 20" x 15" Fabric E backing piece as shown.



6. Layer the unit from Step 3 (right side up), the 20" x 15" Fabric E rectangle from Step 5 (wrong side up, with the basted selvage in the lower-left corner), and one 20" x 15" rectangle of FUSI-BOO. Pin and stitch all around the perimeter, leaving a 3" opening for turning. Clip the corners, taking care not to clip into the stitching. Turn the unit right side out, turn the raw edges of the opening to the inside, hand stitch the opening closed, and topstitch all around the perimeter of the placemat 1/4" from the turned edges.



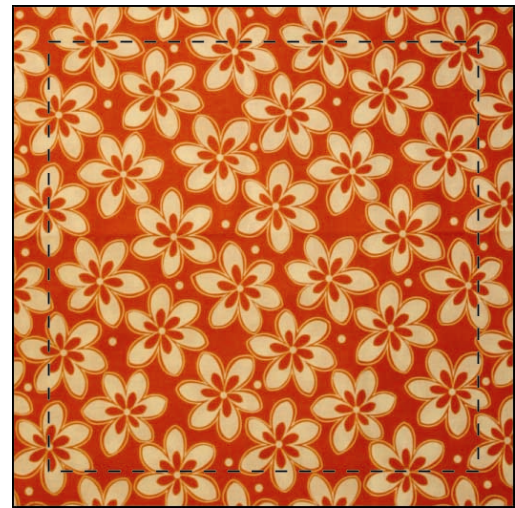
You can use your serger to finish the raw edges of each 18" x 18" Fabric F and Fabric G napkin square with a 3-thread rolled hem. If you don't have a serger, finish the raw edges of each square as follows.

1. Turn a 1/4" hem under to the wrong side of the fabric all around the outside edge of one 18" x 18" napkin square. Press. Turn under a second 1/4" hem. Press.
2. Topstitch the hem approximately 1/8" from the folded edge using matching or contrasting thread as desired. Press.

7. Follow the manufacturer's directions on the FUSI-BOO package to fuse the three layers together. This eliminates the need for basting.

8. Referring to the project photo, finish the placemat by quilting in the ditch along all the seams. Add additional quilting, perhaps outlining some of the fabric motifs, as desired.

9. Repeat Steps 1 – 8 to make a total of four *Spring Floral* placemats.



3. Repeat Steps 1 and 2 to make a total of four *Spring Floral* napkins.

**Enjoy!**

## Making the Napkins

**Hancock Fabrics**  
 DISCOVER THE DESIGNER IN YOU

You'll find more great tips for Machine Embroidery and fabric and notions for your projects by visiting the M'Liss Shop at [www.HancockFabrics.com](http://www.HancockFabrics.com)